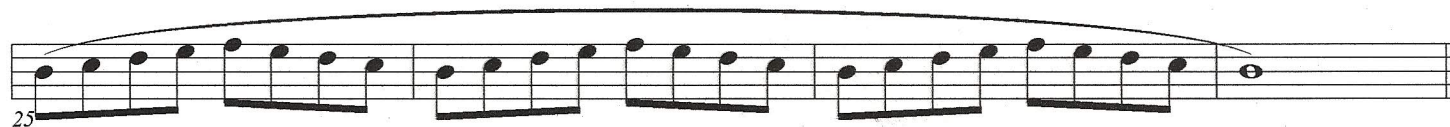
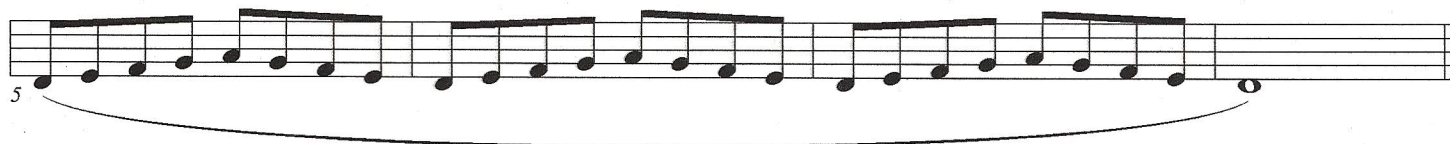
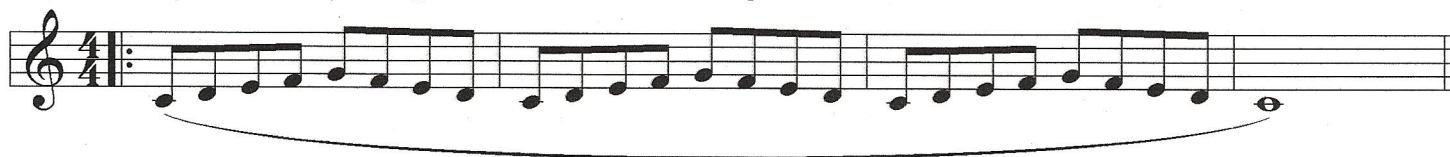


# 60 Minute Practice Routine

## Warm-up 5:00

Buzz on mouthpiece alone

Play one line and rest equal amount before starting next line



# Arpeggio Exercises 5:00

With horn

Play one line and rest equal amount before starting next line

33

37

41

45

49

53

57

61



# Finger Work 15:00

Play through this page twice

Play one line and rest equal amount before starting next line

Repeat 4Xs each line

93

# Advanced Arpeggio Study 10:00

Slur all

Play one line and rest equal amount before starting next line

121

125

129

133

137

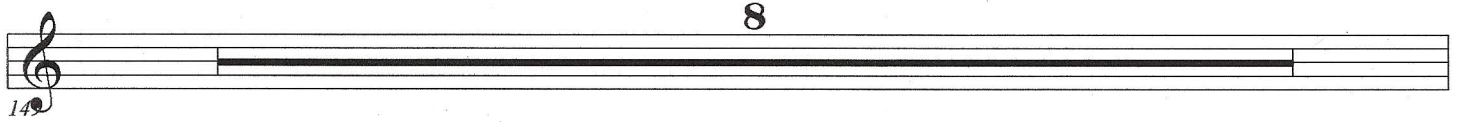
141

145

# Melodic Exercises 20:00

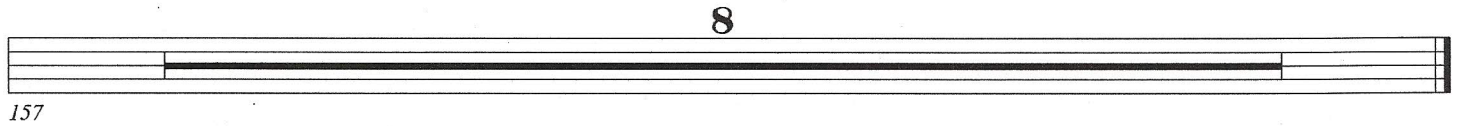
Use any melodies you have available

8



A musical staff with a treble clef on the left. A thick black horizontal line is drawn across the staff, starting from the first line and ending at the fourth space. The number '8' is centered above the staff.

8



A musical staff with a thick black horizontal line drawn across it, starting from the first line and ending at the fourth space. The number '8' is centered above the staff.